



NORTHWEST ARKANSAS
LAND TRUST

2022 ANNUAL REPORT

PROTECTING LAND, WATER, AND WILDLIFE IN
NORTHWEST ARKANSAS



Dear Friends of NWALT,

As we approach the end of 2022, I wanted to take a moment to reflect on the significant changes and transitions that have shaped the Land Trust this year. It has been a transformative period for NWALT, marked by growth, storytelling, and forging new relationships within our communities.

Change is an inherent part of life, and the landscape of Northwest Arkansas is no exception. We witness the wonderful growth happening around us every day. While this change is positive and welcomed, it is essential to strike a balance between progress and the preservation of our natural resources, which surround us in our daily lives. NWALT remains steadfast in its commitment to protecting these invaluable resources in perpetuity, working closely with private landowners, communities, and partners as NWA continues to attract more families to the region.

With former CEO/ED Terri Lane embarking on a new journey with the Arkansas Wildlife Federation, I had the honor of stepping into the role of CEO/ED. Although the transition brought about notable changes, the culture, focus, and mission of NWALT remained unchanged. I have full confidence that the organization I inherited is just as committed and passionate about land protection as ever before.

In 2022, our primary focus has been on sharing our story, cultivating relationships, and engaging with communities. We believe that NWALT's story is powerful and holds relevance for everyone who calls NWA home. It is a story that spans generations, building upon land legacies and enhancing the quality of life for everyone. We have worked diligently to connect with folks across NWA through a community engagement approach to foster trust with our partners throughout 2022.

Looking ahead to 2023, I am excited about the growth of our story. We are committed to continuously improving our work, adapting to change, and better serving our mission. I look forward to the opportunity to get to know many more of you who support the Land Trust and our shared vision.

On behalf of the entire NWALT team, I extend my deepest gratitude for your continued trust, commitment, and generosity. Your support has allowed us to make a lasting impact in preserving wilderness areas, providing outdoor education opportunities, and responsibly monitoring over 6,500 acres. Thank you once again for your unwavering dedication to Northwest Arkansas' future.

A handwritten signature in black ink, reading "Grady Spann".

Grady Spann
NWALT Executive Director & CEO



Friends of NWALT,

This past year was one of the most significant in the history of the Northwest Arkansas Land Trust.

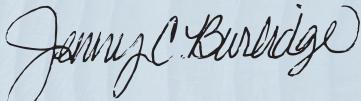
It was the first transition of leadership in 10 years! Scouting a new Executive Director is no easy or lighthearted task, they had to be the perfect fit for NWALT's culture and mission. Lucky for us, Grady Spann had interest and passion in the difference NWALT was making in Northwest Arkansas. His almost 30 years in the Arkansas State Parks system had cultivated a dedication of service to the public, a selflessness as a leader that is rare to find, and accountability for the collective goals and objectives for his team. He was the perfect fit for OUR team.

Thank you to Terri for 10 years of phenomenal leadership that got us to where we are today. Thank you to the staff who work diligently with land owners, government agencies, and other non-profits to fulfill NWALT's promise of land stewardship.

Most importantly, I would like to thank you, the supporters and friends of NWALT, for the trust and gifts you provide for NWALT to continue to permanently preserve wilderness areas, provide outdoor education opportunities, and to monitor over 6,500 acres! Without you, NWALT would not be - there's no other way to say it. You are part of the NWALT team. Northwest Arkansas is more beautiful, wild, clean, and scenic because of your commitment.

We are excited to share the success of this past year with you, and look forward to sharing new accomplishments in the coming year.

Cheers to 2022,

A handwritten signature in black ink that reads "Jenny C. Burbidge". The signature is fluid and cursive, with the first name "Jenny" being the most prominent part.

Jenny C. Burbidge
NWALT Board President



Abundant scenic beauty, wildlife habitats, clean air, clean water, places for outdoor recreation, local food supply, and natural heritage define our quality of life in Northwest Arkansas. And in NWA, life is good.



We invite you to pause, take a deep breath, and celebrate all that we have accomplished together in 2022.

2022 IMPACT NUMBERS



767

ACRES PROTECTED



8

PROPERTIES PROTECTED



2

PUBLIC ACCESS
PROPERTIES



2,100+

LIFELONG LEARNERS



833

VOLUNTEER
EDUCATOR HOURS



43

OUTREACH PROGRAMS

OVERALL IMPACT NUMBERS



ACRES PROTECTED



PROPERTIES PROTECTED



PUBLIC ACCESS
PROPERTIES



LIFELONG LEARNERS*



VOLUNTEER
EDUCATOR HOURS*

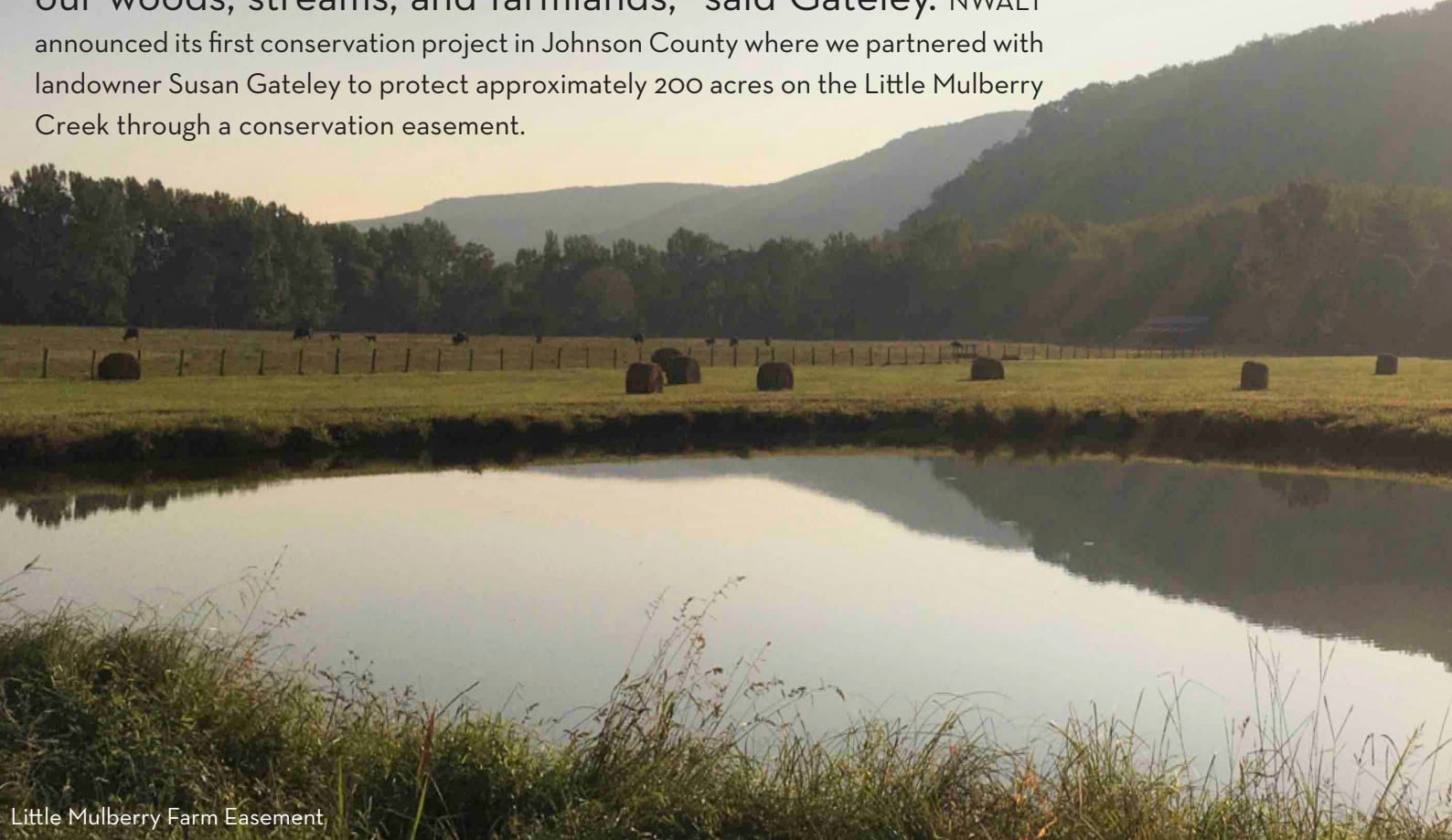


OUTREACH PROGRAMS*

*ESTIMATED

Herb Culver Easement

“I chose to protect Little Mulberry Farm in a conservation easement so that future generations could enjoy the benefits of community and rural life, all while protecting our woods, streams, and farmlands,” said Gateley. NWALT announced its first conservation project in Johnson County where we partnered with landowner Susan Gateley to protect approximately 200 acres on the Little Mulberry Creek through a conservation easement.





Steele-Stevens Park, Elm Springs

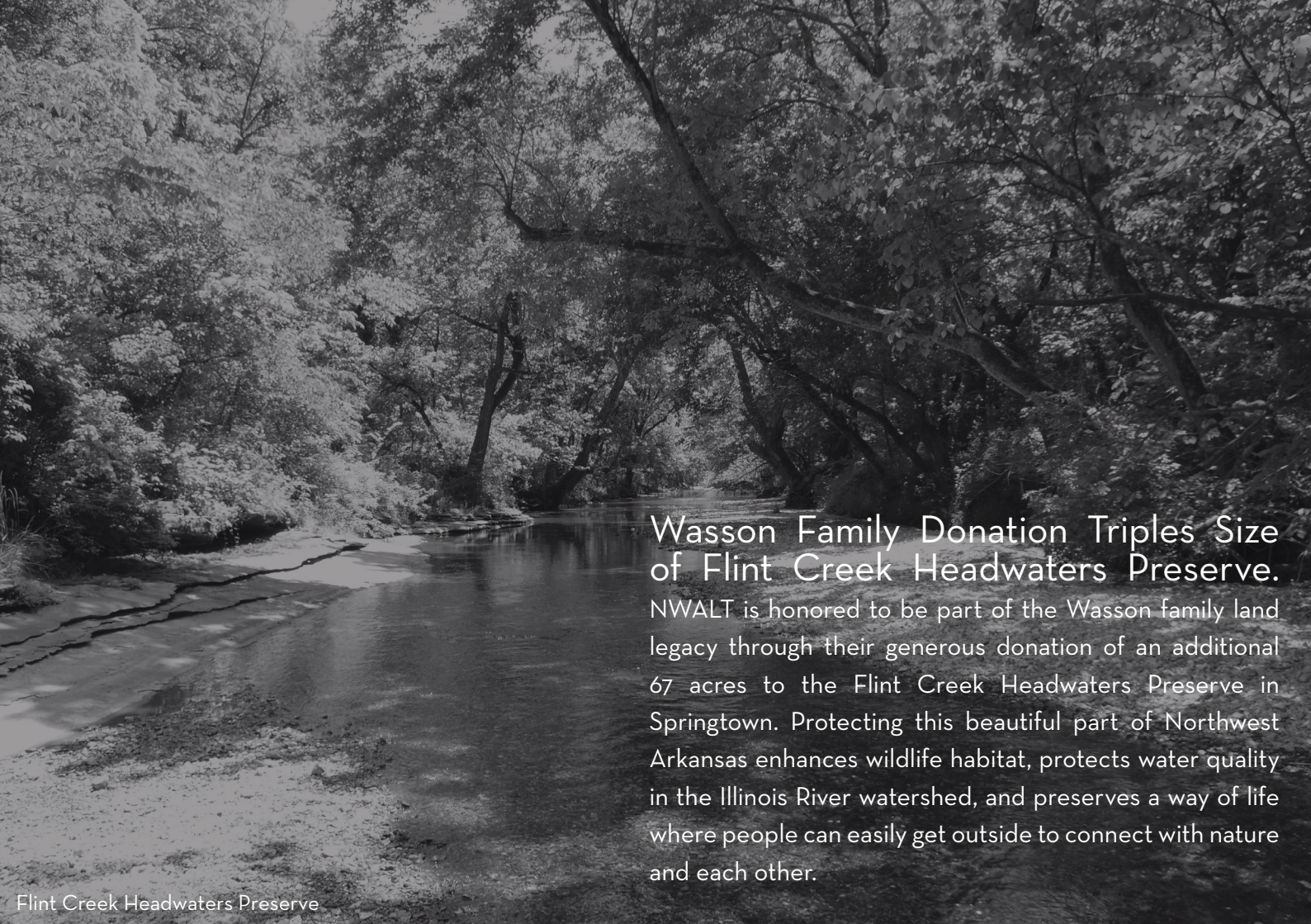
Grady Spann Named Executive Director and Chief Executive Officer of Northwest Arkansas Land Trust. Terri and our board of directors worked together to identify our next leader. In May, Grady Spann joined NWALT as our Executive Director and CEO after serving 29 years with Arkansas State Parks, including the last six as director.

Along with Grady, we welcomed three new full-time staff to our team: Evan Johnson as our Community Engagement Manager, Ryder Snell as Creative and Marketing Manager, and Robert Hopper as Director of Engagement and Giving.

We also celebrated the promotions of Renee Sniegocki to Land Stewardship Manager and Mikayla Alderson to Administration and Human Resources Manager.

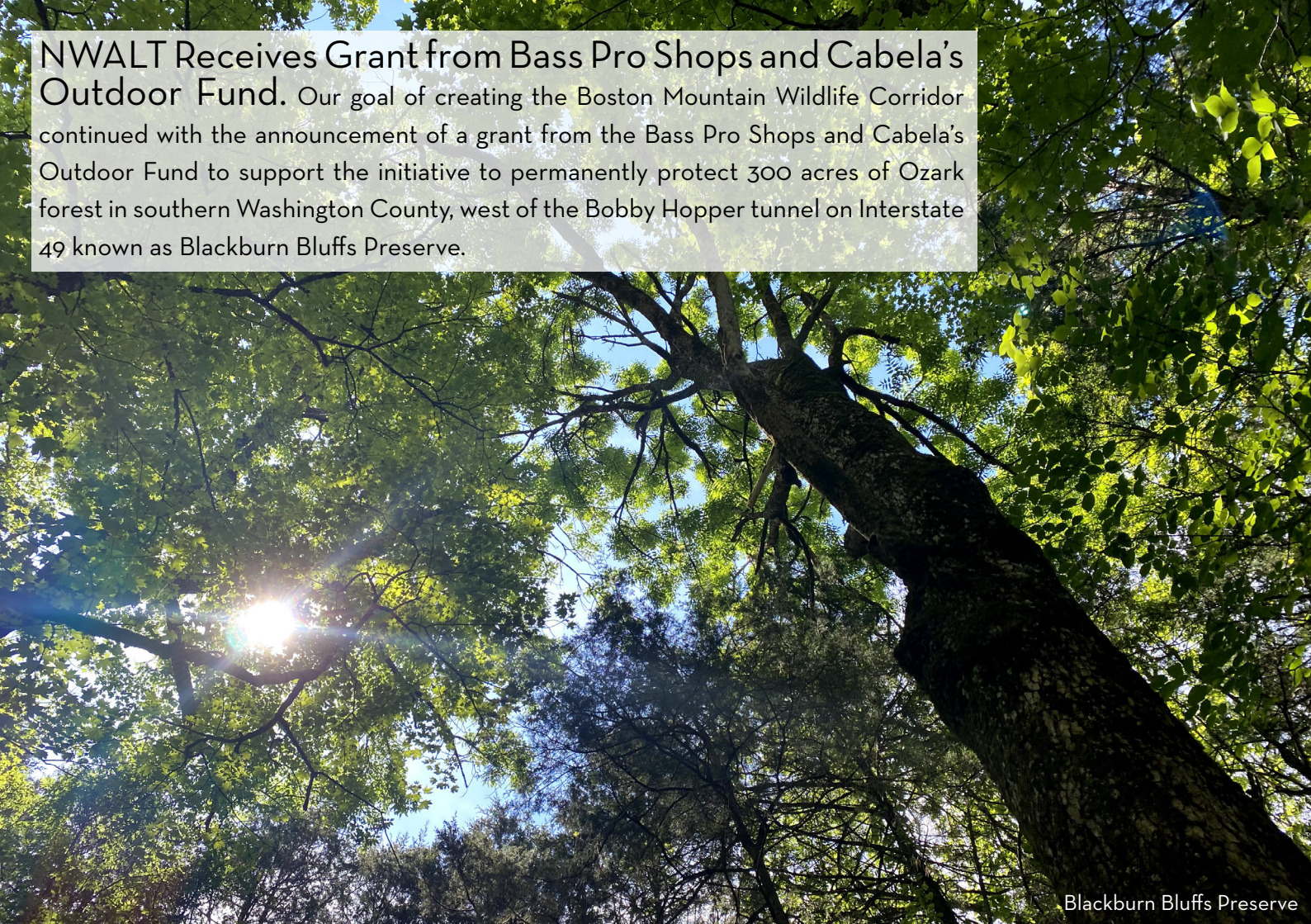
Hinshaw Family Creates a Lasting Land Legacy with Bird Sanctuary. We celebrated the dedication of the Betty Hinshaw Bird Sanctuary in June. This is the first land donation to NWALT that is specifically for bird conservation. The Land Trust will return the pastureland to native grasses to create a habitat for threatened grassland bird species and plans to open the sanctuary to the public later in 2023.





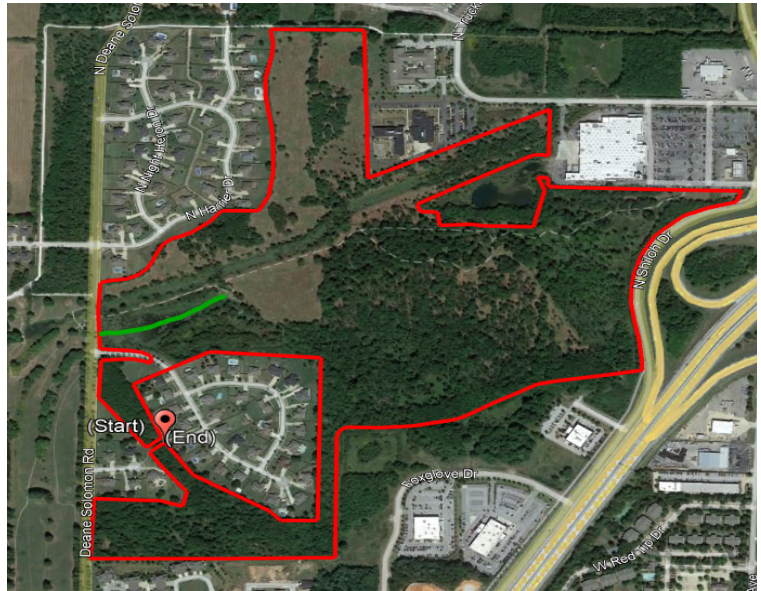
Wasson Family Donation Triples Size of Flint Creek Headwaters Preserve.

NWALT is honored to be part of the Wasson family land legacy through their generous donation of an additional 67 acres to the Flint Creek Headwaters Preserve in Springtown. Protecting this beautiful part of Northwest Arkansas enhances wildlife habitat, protects water quality in the Illinois River watershed, and preserves a way of life where people can easily get outside to connect with nature and each other.



NWALT Receives Grant from Bass Pro Shops and Cabela's Outdoor Fund. Our goal of creating the Boston Mountain Wildlife Corridor continued with the announcement of a grant from the Bass Pro Shops and Cabela's Outdoor Fund to support the initiative to permanently protect 300 acres of Ozark forest in southern Washington County, west of the Bobby Hopper tunnel on Interstate 49 known as Blackburn Bluffs Preserve.


Wilson Springs Preserve Ecology Hike. We partnered with the local chapter of the Society of Wetland Scientists to host the Northwest Arkansas Ecology Tour at Wilson Springs Preserve in Fayetteville. We had over 120 friends join hikes led by local experts in botany, herpetology, and aquatic ecology. Our own Marson Nance, Director of Land Stewardship and Research, led the ornithology hike.



Wilson Springs Preserve is the largest wetland remnant in Fayetteville (121 acres) and one of the last tall grass prairies in the region.



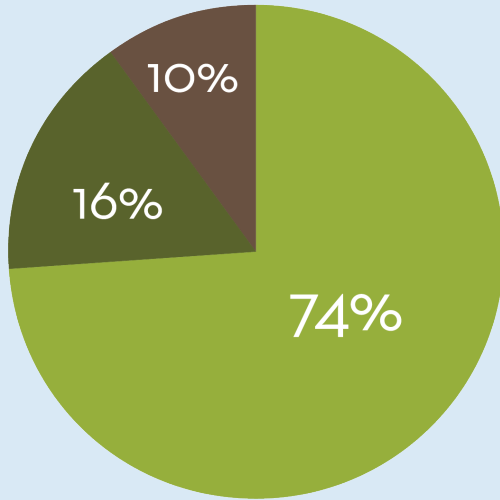
Frank Sharp Honored as First Arkansas Conservation Legend. NWALT held the first Acre by Acre event at the Ozark Mountain Smokehouse in October to honor Arkansas Conservation Legend Frank Sharp. Over 160 friends joined us for a perfect fall night on Kessler Mountain to honor Frank's lifelong commitment to building community and protecting our region's natural beauty and to begin an awareness campaign of the significance of our work to protect our home's water, land, and wildlife.

A photograph of a field of yellow wildflowers, likely Black-eyed Susans, in the foreground. The flowers are in various stages of bloom, with some fully open and others as buds. The background shows a line of green trees under a bright blue sky with scattered white clouds. A semi-transparent grey box with white text is overlaid on the top right of the image.

NWALT Announces Acquisition of 830 Acres of Historic Lake Frances Property. Our work in the Illinois River Watershed and Benton County took a huge leap forward as we closed on the purchase of our largest property yet - Lake Frances Preserve. "This is NWALT's first partnership with the development and construction of hiking, running, and mountain bike single track trails to encourage public engagement with the preserve to better understand the significance of protecting these special habitats," said Grady Spann, CEO of NWALT.

EXPENSES / REVENUE

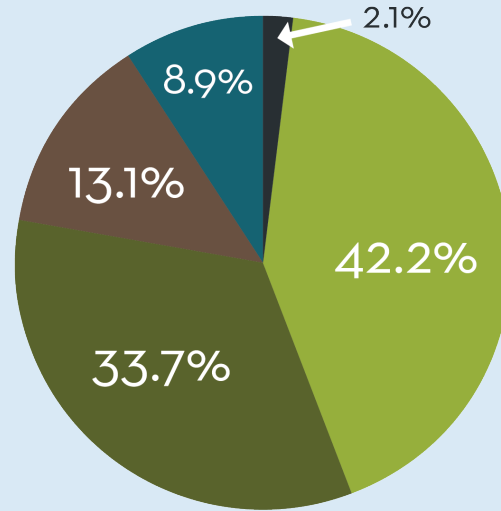
\$731,205.44



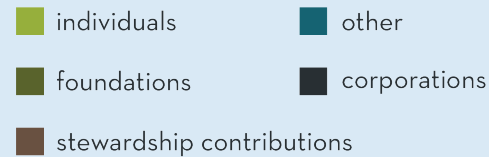
Total Expenses



\$837,036.20



Total Revenue



Audited 2022 financials have not been released. Revenue breakouts are based on total cash revenue for 2022. Expense percentage breakouts have been calculated based on previous percentages of audited functional financial expenses over the last three years.

JOIN OUR MISSION HELP SAVE LAND IN NWA

Thanks to the support and leadership of so many, the Northwest Arkansas Land Trust has worked continuously over the last two decades to save the places that matter most to our community. With the guidance of our new Strategic Land Protection Plan we are prepared to increase the rate of land protection in our region, but we cannot do it without the support of people like you.

We invite you to join us in our critical mission to protect the places that sustain our high quality of life in Northwest Arkansas, before they are gone forever.

DONATE TODAY

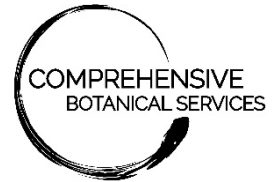




PARTNERS IN CONSERVATION



Beaver Water District



Cabela's

SPECIALIZED REAL ESTATE GROUP



SPRINGDALE™
WE'RE MAKING IT HAPPEN

OUTDOOR FUND

WALTON FAMILY
FOUNDATION



GB SPANN CONSULTING
Legacy Building
for the Outdoors



CENTER FOR
ARKANSAS
FARMS and
FOOD



The Nature
Conservancy
Protecting nature. Promoting life.



DIVISION OF AGRICULTURE
RESEARCH & EXTENSION
University of Arkansas System

MITCHELL

WILLIAMS
LAW FIRM



INTERNATIONAL MOUNTAIN BICYCLING ASSOCIATION



WRIGHT LINDSEY JENNINGS



NORTHWEST ARKANSAS
LAND TRUST

BEAVER
WATERSHED
ALLIANCE



NWALT staff listed below from left to right



BOARD

Jenny Burbidge, President

Eileen Jennings, Vice President

Don Walker, Secretary/ Treasurer

Michele Harrington

Jami Lockhart

Regina Buono

Mark Clippinger

Rick Spicer

Steve Adair

Matt Dickhut

STAFF

Robert Hopper, Director of Engagement and Giving

Susan Koehler, Farmland Preservation Manager

Evan Johnson, Community Engagement Manager

Mikayla Alderson, Administrative & HR Manager

Pam Nelson, Director of Land Protection

Grady Spann, Executive Director & CEO

Renee Sneigocki, Land Stewardship Manager

Marson Nance, Director of Land Stewardship & Research

Ryder Snell, Creative & Marketing Manager





NORTHWEST ARKANSAS
LAND TRUST

1725 S. Smokehouse Trail, Fayetteville, AR 72701
479-966-4666 | info@nwalandtrust.org

www.nwalandtrust.org

